



# About Us

**SOLIN S.A.** is a company that produces composite and plastic pipes as well as fittings for a wide range of applications. Since its establishment, SOLIN's primary and integral purpose is to produce high quality products.

We strongly believe that the success of a business comes from its people. Our employees are our most important asset and the driving force of SOLIN. With their dedication and hard work, they contribute to the achievement of our mission, which is the continuous development and evolution of our company. We invest in them through continuous education and training. Our team consisting of 80 employees has as a daily task to comply with the company's philosophy, which is our customers' satisfaction.

SOLIN is based in Greece, with the head offices, including administration offices and several warehouse spaces being located in Athens, while our factory, with our main warehouse, is located in the A' Industrial Area of Volos with buildings of 17.500m<sup>2</sup>, in a total plot extent of about 33.000m<sup>2</sup>.

In the course of almost 40 years in the manufacturing field, having gained the experience and knowledge as expertise, we are proud that our products are among the top of their range in terms of quality within the international market. SOLIN provides practical, reliable and enduring solutions to multiple applications, always aiming to support its customers in the best way.



More than 35  
Active years



60%  
Of our production  
is exported



ISO certificate  
since 2000

Exports to  
40 countries  
worldwide



Certifications from  
international institutes



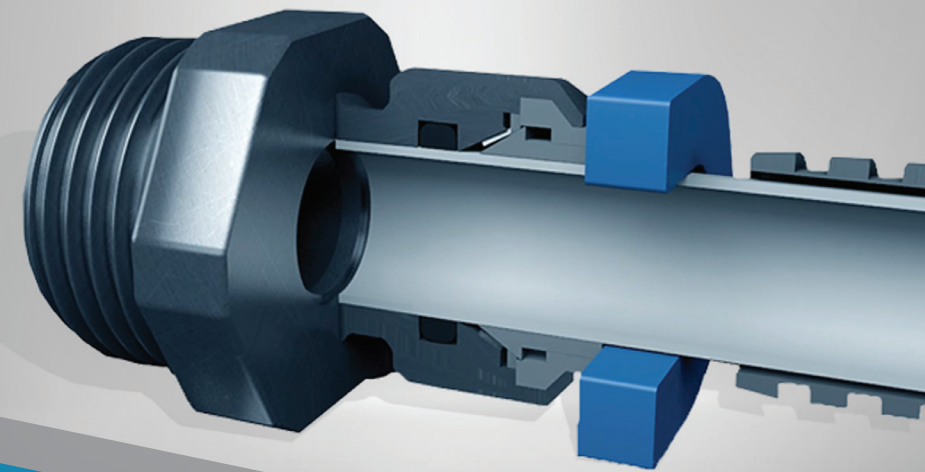
**HEADQUARTERS:** 12 Souliou St | N.Chalkidona, 14343, Athens, Greece | T: +30 210 2531990,  
+30 210 2523636, +30 210 2531585

**FACTORY:** A' Industrial Area of Volos | 38500, Volos, Greece | T: +30 24210 95402, +30 24210 95421

www.solin.gr | secretary@solin.gr



## BATH SYSTEM FOR HOT AND COLD WATER SUPPLY



## SANIFLEX®

"MEASURE - CUT - CONNECT"

SPEED



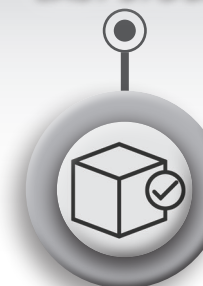
QUALITY



DURABILITY



EASY STOCK





## TECHNICAL INFORMATION

The unique bath system for cold and hot water supply, **SANIFLEX**, consists of chrome plated speed fit, with PEX-b pipes of special dimension (Ø10x1,4) or PERT pipes (Ø8x1). It replaces the flexible pipes that connect hot-cold water in bathrooms.

This system offers easy stock, durability, speed installation and good aesthetics since the pipes are covered with corrugated pipe of white, gold and silver color. The speed fits are available in dimensions 3/8", 1/2" and 3/4" with male or female thread.

SANIFLEX plastic pipes are suitable to transfer hot water up to 95°C under pressure. They are certified from the German institutes **SKZ** (certificate of resistance to high temperatures and pressures) as well as from the English **WRAS** for their suitability in drinking water networks.

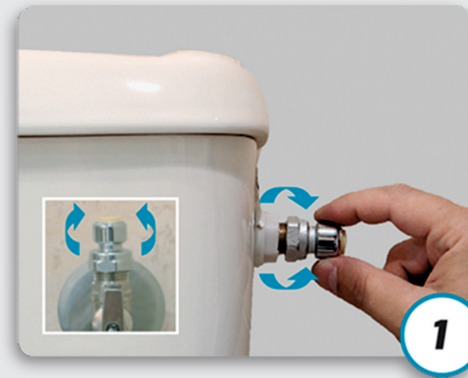


### CONTROL TEST

(for quality certification)	SPECIFICATIONS	REQUIREMENTS	COMMENTS
Hydrostatic pressure	EN ISO 15875-5 Paragraph.4.2	12.5 bar - 95°C for 1000h	✓
Rotation temperature	EN ISO 15875-5 Paragraph.4.5	10 bar with rotation - 95°C/20°C per 15min for 5000 circles	✓
Rotation pressure	EN ISO 15875-5 Paragraph.4.6	23°C with rotation 0.5bar/15bar per 2sec for 10000 circles	✓



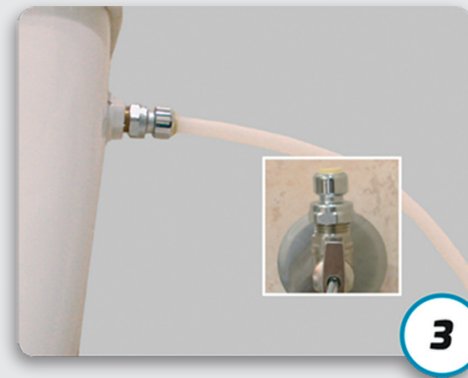
## INSTALLATION INSTRUCTIONS



Screw one speed fit in the angle valve that supplies the water and the second speed fit in the basin's water tank.



Push the pipe into the angle valve speed fit until you hear the characteristic click of successful connection.



Measure the required pipe length for reaching the second (opposite) speed fit and then cut equal length of main and corrugated pipe.

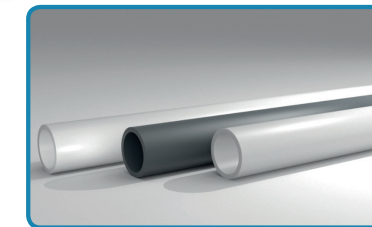


Insert the main pipe to the corrugated one and connect one end of the main pipe with the angle valve. Push the corrugated pipe so that there is a sufficient length of the main pipe to be connected with the speed fit until hearing the characteristic click.

### Useful information for secure and quick installation

- ▶ For right connection, the plastic pipe must be pressed and penetrated into the speed fit, until the characteristic click of the termination is heard.
- ▶ Check if the speed fit with female thread, has a rubber sealing flange. Teflon or other sealing, liquid or tape, are unnecessary.
- ▶ The speed fit can be easily screwed by hand. However, a key use secures final screwing.
- ▶ The plastic pipe must be cut perpendicular to the axis with the special cutter.
- ▶ Storage of plastic pipes (main and corrugated) under UV radiation is forbidden.

## WHOLESALE PACKING



### PIPES

- PIPE PE-Xb Ø10 x 1,4 (WHITE)
- PIPE PB Ø8 x 1 (GREY)
- PIPE PERT Ø8 x 1 (WHITE)



### CORRUGATED PIPES

- CORRUGATED PIPE Ø16 (10) WHITE, SILVER OR GOLD



### PLASTIC ACCESSORIES

- PLASTIC DISCONNECTOR OF SPEED FIT



### SPEED FITS Ø10

- SPEED FIT Ø10 x 1/2" (F) CHROME PLATED
- SPEED FIT Ø10 x 3/8" (F) CHROME PLATED
- SPEED FIT Ø10 x 3/4" (F) CHROME PLATED
- SPEED FIT Ø10 x 1/2" (M) CHROME PLATED



### SPEED FITS

- ANGLE SPEED FIT FOR WASHING MACHINE Ø10 x 3/4" (F) (WITH FREE NUT) CHROME PLATED



### SPEED FIT SET

- SPEED FIT SET FOR BATHROOM FAUCET Ø8 x M10



### SPEED FITS Ø8

- SPEED FIT Ø8 x 1/2" (F) CHROME PLATED
- SPEED FIT Ø8 x 3/8" (F) CHROME PLATED
- SPEED FIT Ø8 x 3/4" (F) CHROME PLATED
- SPEED FIT Ø8 x 1/2" (M) CHROME PLATED



### RETAIL PACKING

- SANIFLEX SET WITH SPEED FIT 3/8" (F)
- SANIFLEX SET WITH SPEED FIT 1/2" (F)
- SANIFLEX SET WITH SPEED FIT 3/4" (M)

**EACH PACKAGE INCLUDES:** 3m Ø10 pipe, 3m corrugated pipe, 10 speed fits, 1 disconnecter.